



Ten Second Color (TSC) and Active Elements (AE) Dyes

Ten Second Color™ (TSC) and Active Elements Speed Color (AE) are penetrating dyes to color concrete and other cementitious surfaces. When properly applied, they create beautifully mottled effects similar to acid stain in a matter of seconds without the wait time required by acid, saving you time and money. TSC and AE are translucent dyes, and colors can be combined into countless variations and hues, or layered for unique effects. Simply add required amount of acetone and go! For interior and exterior use.

Ten Second Color (TSC)



CR-200 Ebony



CR-201 Cherrywood



CR-202 French Roast



CR-203 Imperial Blue



CR-204 Evergreen



CR-205 Amber



CR-206 Violet



CR-207 Cranberry



CR-208 Caribbean



CR-209 Hazelnut



CR-210 Cinnamon



CR-211 Montana Wheat



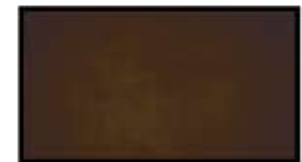
CR-212 Citron



CR-213 Rosewood



CR-214 Tuscan Brown



CR-215 Espresso Bean

Active Elements (AE) Speed Color



SC-02 River Rock



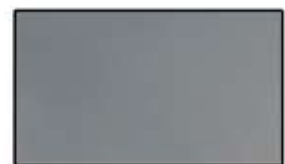
SC-04 Charcoal



SC-22 Taupe



SC-25 True White



SC-45 Storm Grey



SC-49 Smoke



SC-56 Buff



SC-67 Cream

Dye samples shown above are representative of dye applied to standard, gray concrete using the directions provided on the Technical Data Sheets. Results may vary depending on the condition, age and makeup of the concrete, and/or the application methods used. Always test prior to use.